



Welcome to our webinar

Political and Educational Spaces For ALL



- **If you need to access the slides, please visit the TransMedia Catalonia dedicated webpage.**
- **To use live captions go to your meeting controls at the top of the screen and select More. > Language and speech > Turn on live captions.**



Welcome to our webinar

Political and Educational Spaces For ALL





**What are your expectations for this
webinar?**

www.menti.com

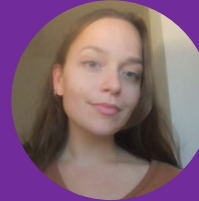
Agenda

Political and Educational Spaces FOR ALL

13/11/2023

17.00 - 18.30

REGISTER NOW



- Introduction.
- Presentation of the policy paper “Making Political Participation Structures Accessible to Migrants”.
Chiara Gunella
- The role of migrant led organisations in promoting accessible political spaces. The Ripollet case study.
Razan Ismail
- Accessibility needs in higher education for individuals with sensory disabilities.
Irene Hermosa Ramírez.
- Challenges and strengths related to providing accessible education within the Metaverse.
Irene Hermosa Ramírez
- Q&A and discussion.



MILE'S GOALS

- MILE (Migrant Integration Through Locally designed Experiences) is a two-year project focusing on creating sustainable ecosystems of exchange between **cities and migrant communities**.
 - Understand the **needs of municipalities and migrant and refugee communities in their local context**
 - Boost the **political participation** and leadership of migrants and refugees
 - Promote **inclusive policy-making in cities**
 - Create **long-term networks of exchange and collaboration for municipalities and migrant communities**





4 municipalities: Ioannina (Greece), Riga (Latvia), Birmingham (UK), Ripollet (Spain)

4 Research groups

4 Migrant led organisation

+ **Integrim** (European Level)

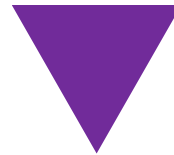
+ **UNITEE** (project leader and outreach)

+ **New Women Connectors** (Training)

+ **Amsterdam and Utrecht** (support)



The 4 research groups conducted research on **political participation for migrants in four municipalities** and produced reports with quantitative and qualitative data about **Ripollet, Ioannina, Birmingham, and Riga.**



OUR FOCUS

Making Local Political Participation Structures Accessible to Migrants



**Migrant
Integration through
Locally designed
Experiences**

Examples of political participation structures:

- **Forums of community engagement**
- **Consultative bodies for stakeholder input**
- **Referendums**
- **Online questionnaire**
- **Advisory committees**
- **Participatory budgeting**



Co-funded by
the European Union



The 4 municipalities offer participation structures:

- **Ripollet and Riga** prioritize **participatory budgeting** as a method of promoting community involvement.
- **Ioannina** encourages internal meetings to discuss policies.
- **Birmingham** has implemented the "**Be Heard**" consultation page to foster greater community involvement.

But there is still a deficiency in well-defined formal frameworks with measurable benchmarks for assessing the participation of migrants



**5 CRUCIAL STEPS THAT CAN
GUIDE MUNICIPALITIES IN
CREATING MORE INCLUSIVE
PARTICIPATION STRUCTURES**

**1. Know and
engage your
community
through
partnership
working**

**2. Make political
participation
structures
accessible to all.**

**3. Promote
diversity of
political
participation
structures**

**4. Promote
participatory
budgeting**

**5. Measure your
impact**



**Migrant
Integration through
Locally designed
Experiences**



1. Know and engage your community through partnership working

Ripollet, Riga and Ioannina reported difficulties in engaging with the migrant communities:

- **Ripollet: Uncertainty surrounding legal status and the asylum application** process has resulted in reduced motivation among migrants.
- **Riga: A limited understanding of the official language** has hindered communication and engagement.
- **Ioannina:** As a transit city, people are hesitant to make commitments.
- **Lack of effective engagement strategies in some municipalities.**

Establish an **Engagement Officer** to know migrants' communities needs and interact with migrant led organisation.

Birmingham introduced the **Engagement Officer in 2020**, resulting in increased interaction and participation.



2. Make Political Participation Structures Accessible to All

- Inadequate translation of political participation access points. Often, only bureaucratic and essential information is translated.
- Insufficient consideration of intersectionality when establishing spaces for dialogue and discussion.

- Conduct research on the **primary languages** spoken by migrant communities
- Invest in **comprehensive translation services** and keep in mind that certain terms may have different meanings in different contexts.
- Create an **accessibility plan for your municipality** to ensure that everyone can access important information. **Create a map of access take into account intersectionality.** (Women - who still often have childcare responsibilities)
- **Ioannina** has developed a guide of its social services to translate in the 7 most commonly spoken languages by migrants in the municipality.



3. Promote diversity of political participation structures

- Several participation structures are available in the 4 municipalities, including forums, informal meetings, questionnaires, and dedicated websites.
 - **However** individual migrant involvement is not actively promoted.
 - **Language and cultural factors**, which can affect participation, are rarely taken into account.
-
- Keep in mind that **political participation can be perceived differently** depending on cultural, social and political context.
 - Consider collaborating with **experts in intercultural dialogue and mediation** to find solutions.
 - For example, Ioannina has partnered with Akadimia, an external organization that coordinates political participation spaces while taking into account **cultural, social, political and religious aspects**.



**Migrant
Integration through
Locally designed
Experiences**

Thank you!
chiara.gunella@uab.cat



Co-funded by
the European Union