

**Leading
Lab Technologies**

RΔYΡΔ

INTRODUCTION

History

1970 RAYPA was founded by Mr. Ramón Espinar

2008 2nd generation take over

2016 New makeover

2019

- ✓ 30 employees
- ✓ Turn over: 3.6 M€
- ✓ 85% Sales on Export
- ✓ Sales in more than 70 countries
- ✓ More than 60.000 equipments manufactured



PRODUCTS RANGE

 Sterilization

 Food analysis

 Incubation and drying

 Thermostatic baths

Sterilization

- ✓ From 8 to 150 L
- ✓ Vertical or horizontal loading
- ✓ Microprocessor controlled with connection to PC
- ✓ Solids or liquids programs
- ✓ Options: Heat probe and thermal printer
- ✓ Range:
 - ✓ WITHOUT DRYING
 - ✓ WITH DRYING
 - ✓ WITH EXTERNAL STEAM GENERATOR (FRACTIONED VACUUM)
 - ✓ WITH COUNTER-PRESSURE
 - ✓ SMART AUTOCLAVE
 - ✓ MEDIA PREPARATORS



Food analysis

- ✓ Digestion systems
 - ✓ 100 ml or 250 ml tubes
 - ✓ Precise control of temperature ramp
- ✓ Nitrogen distillers
 - ✓ Several levels of automation
- ✓ Fiber extraction system
- ✓ Fat extraction system
- ✓ Oenologic Distiller



Incubation and drying

- ✓ Digital control
- ✓ Made in AISI-304 stainless steel
- ✓ From 20 to 720 L
- ✓ Incubators
(from Amb. +5 °C to 80 °C)
- ✓ Refrigerated incubators
(from 0 °C to 45 °C)
- ✓ Ovens
(from Amb. +5 °C to 250 °C)
- ✓ Fan assisted ovens
(from Amb.+5 °C to 250 °C)
- ✓ Vacuum drying ovens
(from 35 °C to 200 °C)
- ✓ PC Conection



Sterilization

Media preparator

Processes

Characteristics

Intended use

Advantages

Benefits

Models

Certifications

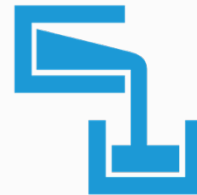
Accessories



DISCOVER
AE-MP



PROCESSES

**3 in 1**3 processes
1 equipment**Media****formulation:**

Mix the components
in the internal
vessel while stirring.

Sterilization:

autoclave mode
while stirring.

Dispensing

the product with
peristaltic pump
while stirring.

CHARACTERISTICS

- ✓ All the process is controlled by a built-in heart probe to ensure that the media is on the right conditions.
- ✓ Self-cleaning and sterilization of the dispensing line using the same steam of the process.
- ✓ Once the cycle is completed, all the instruments used can be sterilized on the Media Preparator using like a normal autoclave (you do not need different equipment).



INTENDED USE

- ✓ Basic food microbiology
 - **Peptone water:** suspension culture media for bacteria growing.
 - **Nutrient agar:** nutrient culture media for bacteria cultivation.



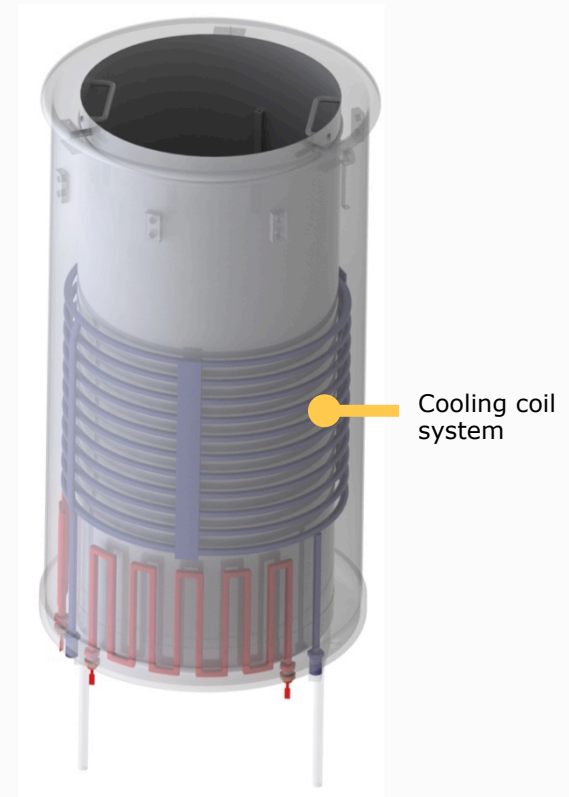
INTENDED USE

- ✓ Plant Tissue
 - **Nutrient agar:**
nutritive culture media to grow the plant cuttings and multiply the production of a same variety.



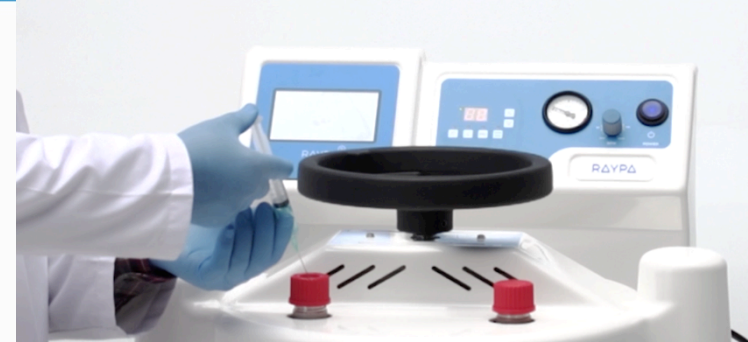
ADVANTAGES

- ✓ Control of sterilization with F_0 value.
- ✓ Full integration of media preparation, sterilization and dispensation.
- ✓ Selectable cooling / dispensing temperature between 30°C and 80°C.
- ✓ Automatic cleaning of dosing lines: before and after dispensation.
- ✓ Transfer of sterilization data to a PC for data traceability.



MORE ADVANTAGES

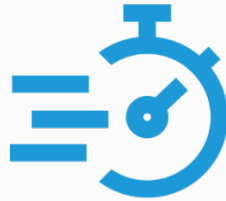
- ✓ 50 user programs in a colour Touch Screen.
- ✓ Flexible heart probe included.
- ✓ Automatic water level control.
- ✓ Automatic water feeding (optional).
- ✓ Precise dosing of control media.
- ✓ Removable magnetic stirrer for easy cleaning.
- ✓ Exchangeable media vessel.
- ✓ Addition port for antibiotics or pH correction.



BENEFITS



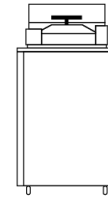
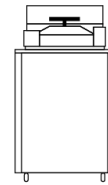
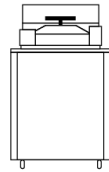
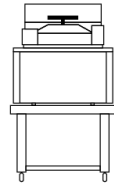
Easy to work
with



Fast complete
process



MODELS



General data

	AE-20 MP ¹	AE-40 MP	AE-60 MP	AE-80 MP	AE-100 MP
Media preparation capacity min - max	2 - 18 L	3 - 37 L	3 - 57 L	5 - 78 L	5 - 97 L
Chamber dimensions Ø x H	320 x 350 mm	320 x 500 mm	320 x 700 mm	420 x 500 mm	420 x 700 mm
Power ²	3000 W	6000 W	9000 W	12000 W	15000 W
Electrical voltage ³	230 (1P+N+E) V	400 (3P+N+E) V	400 (3P+N+E) V	400 (3P+N+E) V	400 (3P+N+E) V
Frequency	50/60 Hz	50/60 Hz	50/60 Hz	50/60 Hz	50/60 Hz
External dimensions L x D x H	615 x 815 x 735 mm	615 x 815 x 1100 mm	615 x 815 x 1320 mm	755 x 935 x 1285 mm	755 x 935 x 1385 mm
Weight	95 Kg	165 Kg	180 Kg	250 Kg	295 Kg

¹ Included stainless steel table with casters. Ref. TABLE-MP, ext. dimensions L x D x H: 700 x 700 x 600 mm and weight: 19 Kg

² Consult overpowered equipments

³ Ask for other voltages.

Certifications

Safety features

- ✓ Door blocking systems with positive pressure.
- ✓ Open door sensor.
- ✓ Water level detector.
- ✓ Safety valve.
- ✓ Safety thermostat.

Regulations

UNE-EN-ISO 9001:2015 Quality management system

EN-61010-1 Safety requirements for electrical equipment for measurement, control and laboratory use. Part 1: General requirements

EN-61010-2-040 Part 2-040: Requirements for laboratory autoclaves

EN-61326 Electrical equipment for measurement, control and laboratory use. EMC Requirements

AD 2000 Merkblatt Pressure vessels

2014/35/UE Low Voltage

2014/30/UE Electromagnetic Compatibility

2014/68/UE Pressure equipment

Certifications



Accessories

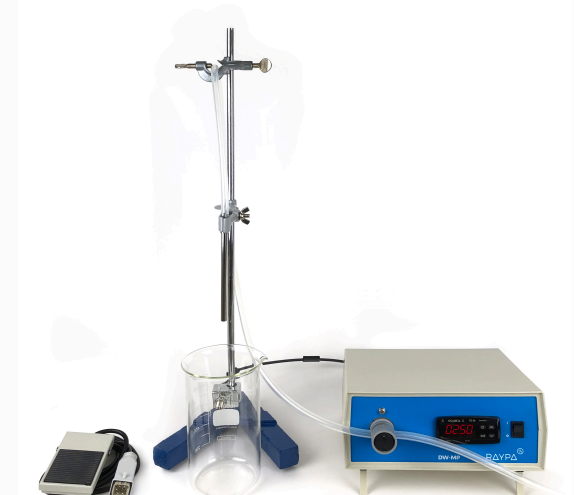
ACCESSORIES



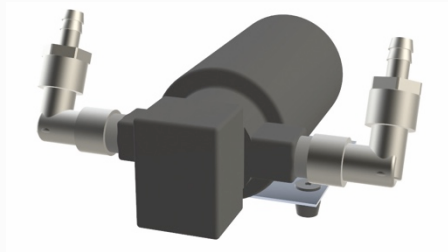
ADDITIONAL PERISTALTIC PUMP HEAD



SOFTWARE SW8000



DOSING STATION FOR CULTURE MEDIA



SET AUTOMATIC FILLING



CABLE GLAND 1/2"



INTEGRATED PRINTER

THANK YOU!

RAYPA

Leading
Lab Technologies

DISCOVER
AE-MP



www.raypa.com www.mediapreparators.com

Contact with us!

