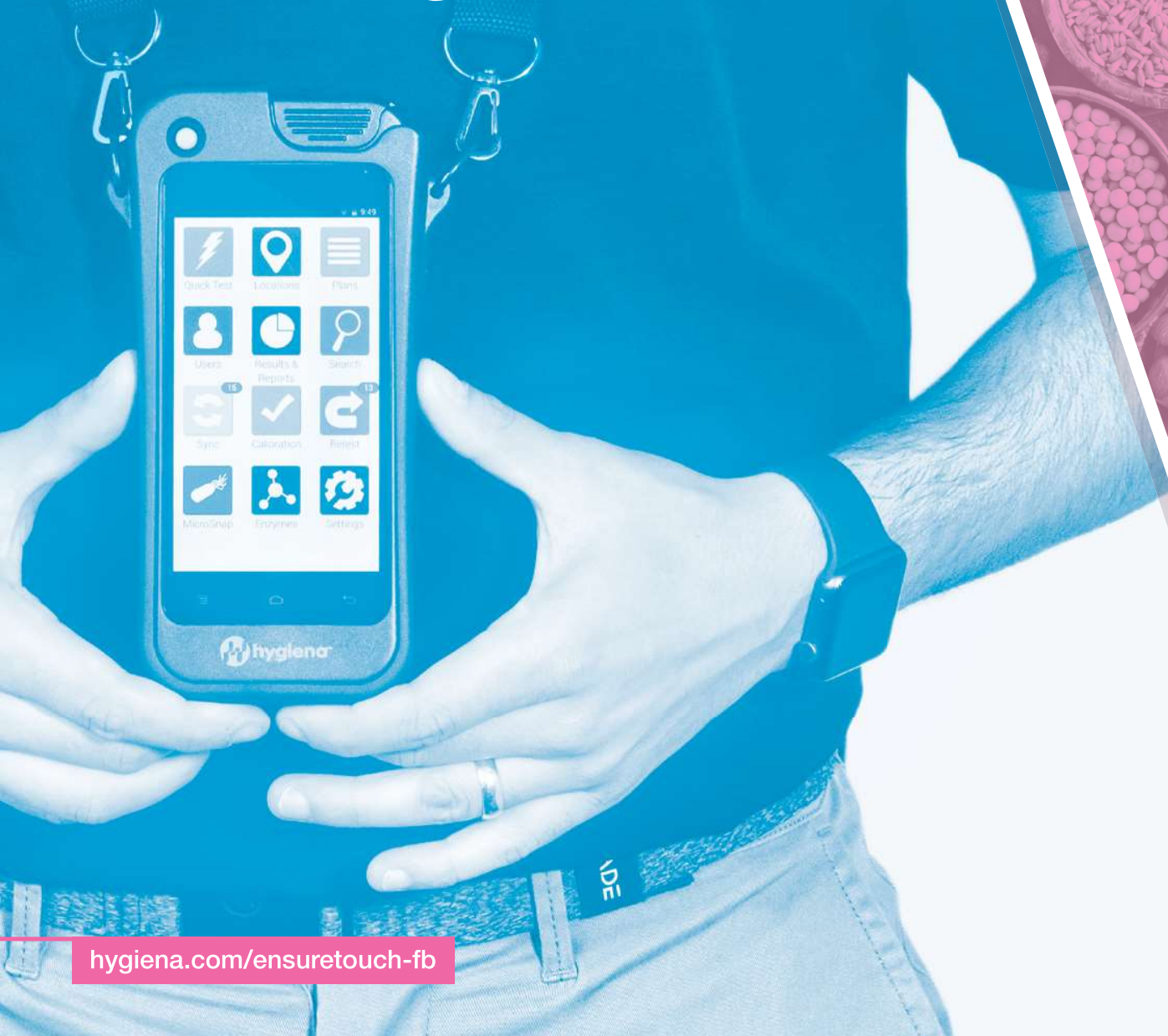




EnSURE™ Touch

Simplifying Food Safety



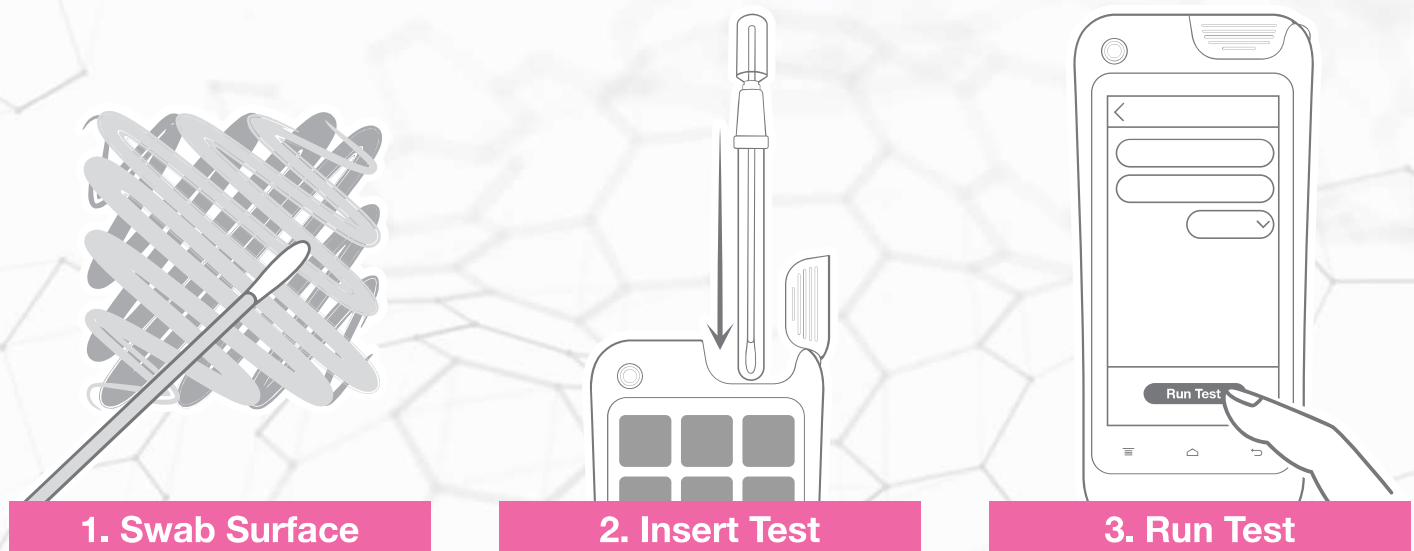
hygiena.com/ensuretouch-fb

Introducing EnSURE™ Touch

EnSURE™ Touch is the next generation ATP and environmental monitoring system. Designed to work like your smartphone, it effortlessly provides you with rapid and accurate data to support your food safety program. EnSURE Touch adapts to your workplace and is built with you in mind. Whether you're new to food safety or if you've been here a while, EnSURE Touch helps make everything food safety a little bit easier.

How it works.

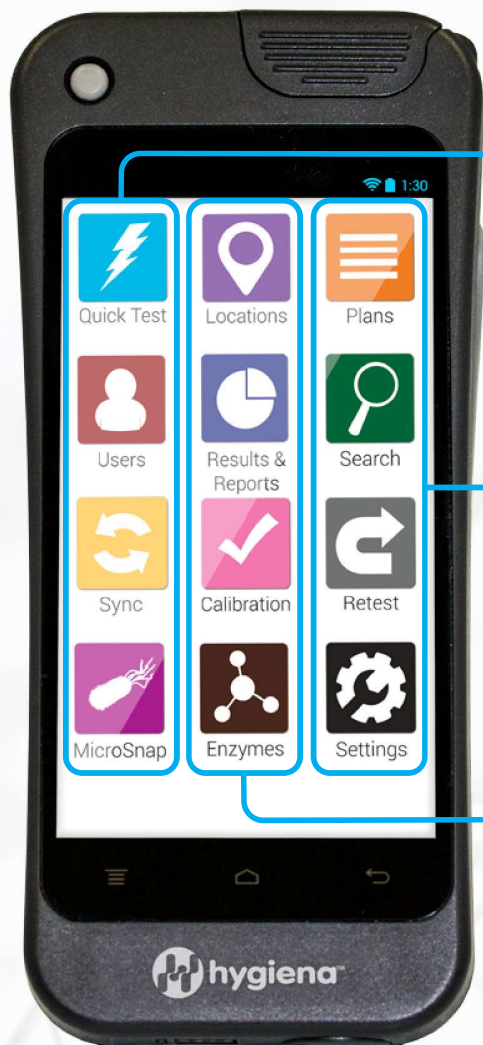
EnSURE™ Touch is a smart handheld instrument that rapidly measures contamination from bacteria, pathogens, foods, enzymes and indicator organisms. After taking a sample the system measures the amount of Adenosine Triphosphate (ATP – found in all living or once living things) and gives you an objective numerical value combined with a Pass/Caution/Fail notification.



How can it help?

- Verify sanitation in 10 seconds
- Keep food safety data in one place
- Make audits easier
- Compare the effectiveness of sanitation procedures
- Objectively prove standards have been met
- Communicate success with insightful reports
- Identify problem areas
- Provide on-the-spot training and feedback
- Meet FSMA, GFSI, and ISO standards
- Protect brand reputation
- Reduce risk of food poisoning, facility closure, and product recalls
- Lower food safety costs by bringing testing in-house
- Provide evidence of due diligence – HACCP
- Optimize processes and limit down-time
- Makes environmental monitoring as easy as using a smartphone
- Make multi-site training more effective with remote screen sharing on the instrument

Innovation at Your Fingertips



Quick Test

Run a test in two touches.



Sync

Wirelessly sync data to SureTrend Cloud.



Plans

Easily group, schedule, and randomize testing locations to ensure sampling coverage.



Retest

Swipe through failed tests and instantly run re-tests to show effectiveness of corrective action.



Locations

Create & edit test points with custom fields and pass/fail limits on the go.



Calibration

Verify calibration in just a few taps without having to send back to manufacturer



Users

Manage access with password protection and roles.



MicroSnap

Test and show results for Coliforms, *E. coli*, *Enterobacteriaceae*, and Total Viable Count.



Search

Quickly find the location or plan you're looking for.



Settings

Customize settings for language, custom fields, and test types.



Results & Reports

Easily view testing results and trend analysis.



Enzymes

Test and show results for Alkaline Phosphatase and Acid Phosphatase.



The AOAC Research Institute, one of the world's most recognizable product certification organizations, issued its *Performance Tested Method*SM certificate to UltraSnapTM Surface ATP Tests for use with the EnSURETM Touch.

Specifications:

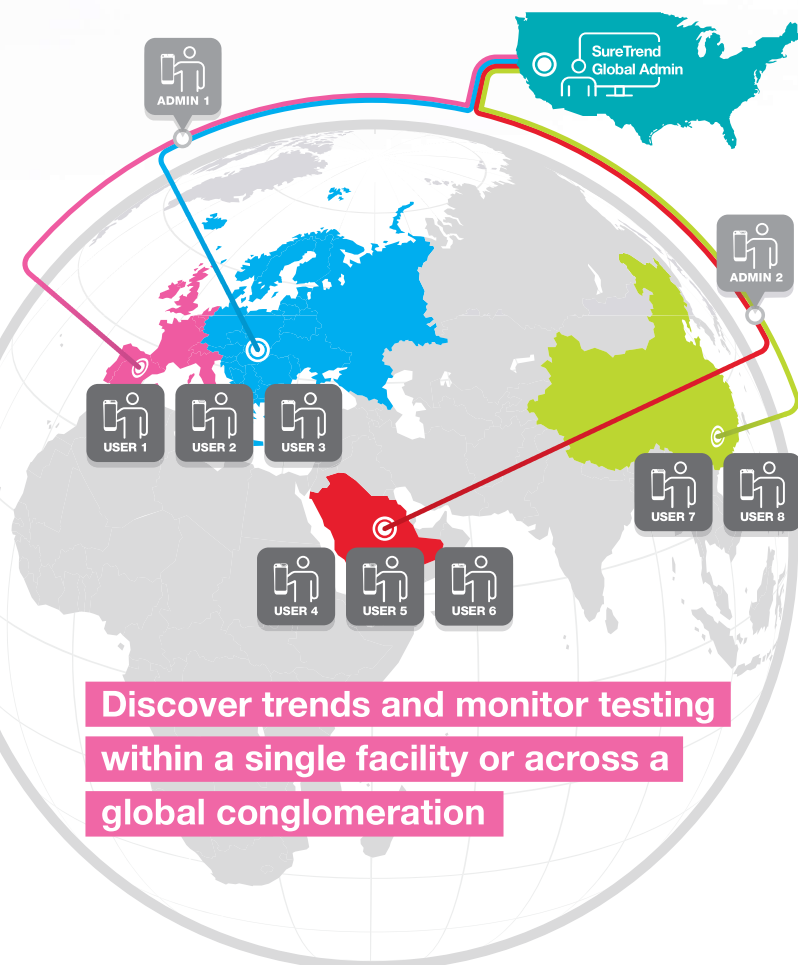
Size:	7" x 3" x 1"
Weight:	0.7 lbs
Sensitivity:	0.1 fmole of ATP
Memory:	2GB internal + cloud storage
Connectivity:	USB or Wi-Fi
Language:	Supports multiple languages
Battery:	Rechargeable Lithium-Ion battery with USB-C charging*

* Battery life varies based on use and configuration

Always Up-To-Date Always Backed Up Always Encrypted



SureTrend Cloud is an easy-to-use online data analysis platform that syncs wirelessly with EnSURE Touch to unite testing data and bring it to life. It enables users to monitor testing results and manage user access across multiple facilities, making risk management easier than ever.



**Discover trends and monitor testing
within a single facility or across a
global conglomeration**

Features & Benefits:

- Easy-to-use & intuitive – no training required
- Web-based platform – no software downloads needed
- Unite multiple types of food safety data in one place
- Invite colleagues and assign roles to increase collaboration, accountability, and organizational buy-in and provide greater visibility into food safety program
- Interactive dashboard gives a birds-eye-view of overall testing performance
- Ready to use reports save time, custom reports add extra detail & personalization
- New capabilities added regularly via seamless and automatic software updates – no need to call IT
- Unlimited data and storage – no annual fees or startup costs
- Easily manage one or hundreds of instruments from one account
- Track re-tests to discover opportunities for retraining or identify equipment that may need replacing

Test Devices

Hygiene test devices are unbelievably easy to use. Their design maximizes sample collection and recovery while using patented Snap-Valve™ technology to make activation easy. These devices eliminate extraneous materials, improve efficiency, minimize variability, and lower costs.

UltraSnap™ | Surface ATP Test



Catalog No. US2020 | Qty: 100

[Instructional Video Online](#)

SuperSnap™ | High-Sensitivity Surface ATP Test



Catalog No. SUS3000 | Qty: 100
Catalog No. SUS3000X | Qty: 100

[Instructional Video Online](#)

AquaSnap™ TOTAL | Water ATP Test



Catalog No. AQ-100X | Qty: 100

[Instructional Video Online](#)

AquaSnap™ FREE | Water ATP Test



Catalog No. AQ-100FX | Qty: 100

[Instructional Video Online](#)

CalCheck | LED Calibration Verification Device



Catalog No. CAL | Qty: 1

[Instructional Video Online](#)

MicroSnap™ | Indicator Organism Tests



Catalog No. MS1-CEC | Qty: 100

Catalog No. MS2-ECOLI | Qty: 100

Catalog No. MS2-COLIFORM | Qty: 100

Catalog No. MS1-TOTAL | Qty: 100

Catalog No. MS2-TOTAL | Qty: 100

Catalog No. MS1-EB | Qty: 100

Catalog No. MS2-EB | Qty: 100

[Instructional Video Online](#)

ZymoSnap™ ALP | ALP Pasteurization Verification Test



Catalog No. ZS-ALP-100 | Qty: 100

[Instructional Video Online](#)

CROSS CHECK | ACP Cooking Efficiency Test



Catalog No. CX-3000 | Qty: 100

[Instructional Video Online](#)

EnSURE Touch is factory calibrated and uses advanced technology that does not require recalibration.

CalCheck is used for in-house calibration checks as part of a quality control program so you don't need to mail it in for an annual calibration check.