



InSite® | *Salmonella*

Hygiena® InSite® *Salmonella* is a quick and easy test for the detection of *Salmonella* species in food processing environments. The test contains a liquid medium formulated with growth enhancers and chromogenic compounds selective for *Salmonella* species.



Benefits:

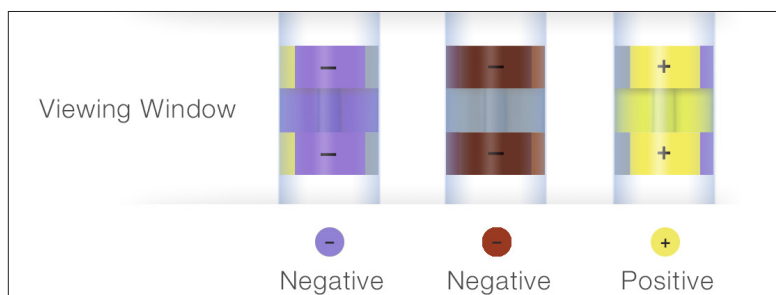
- Easy to use with no preparation steps required
- Large sponge tip maximizes sample collection for accurate results
- Eliminates costly outside lab fees for an equivalent test
- Color results are easy to interpret – bright yellow indicates presence of *Salmonella* species
- Presumptive positive results in as little as 24 hours
- Negative results in 48 hours
- Self-contained tube eliminates risk of contamination, makes testing easier, faster, and more cost-effective

Sensitivity:

- Detects *Salmonella* species down to <10 CFU, even in the presence of high numbers of competing organisms

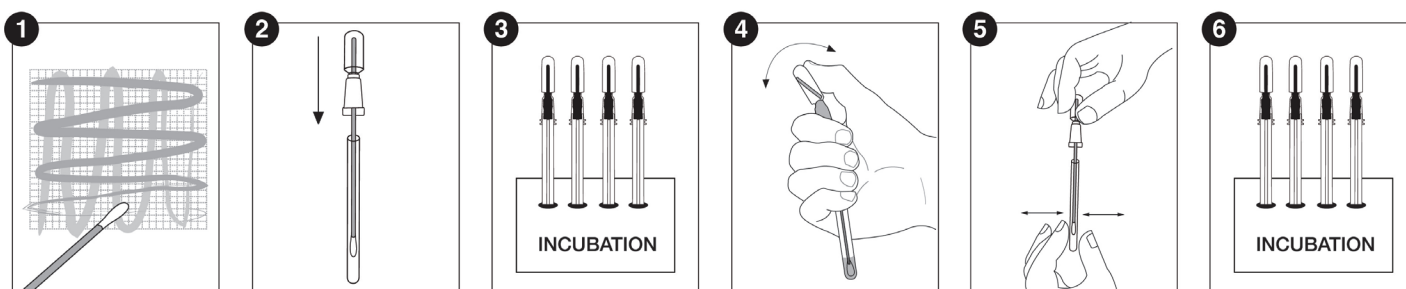
Interpretation:

- InSite *Salmonella* features a viewing window with a result chart for easy interpretation. Results are presumptive positive when the InSite *Salmonella* media turns bright yellow.



Catalog No.	Description	Quantity
IS050	InSite <i>Salmonella</i> Environmental <i>Salmonella</i> Species Test	50

InSite® Salmonella Procedure

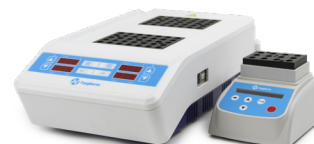


See an instructional demo at [HygienaTV](#) or [HygienaTV](#)

Related Products

Digital Dry Block Incubators

Digital incubators are capable of up to 105 °C and flexible for any Hygiena test device. Available in two sizes.



InSite® *Listeria* Environmental *Listeria* Species Test

InSite *Listeria* is a quick and easy test for the detection of *Listeria* species in 24-48 hours. The test contains a liquid media formulated with selective agents, growth enhancers, and color changing compounds specific to the growth of *Listeria* species.



MicroSnap® Coliform & *E. coli*

MicroSnap Coliform & *E. coli* are rapid tests for detection and enumeration of Coliform bacteria. Single figure organism numbers can be detected in the same day.



MicroSnap® Total

MicroSnap Total delivers total viable count (TVC) results in the same day.

MicroSnap® EB

MicroSnap EB delivers results in the same day.

BAX® System Instruments

The BAX System harnesses the power of DNA-based foodborne pathogen detection to help you make product decisions with confidence. An extensive assay portfolio, multiple platforms, and flexible protocols enable food labs of any size to take advantage of this benchmark technology.



Catalog No.	Description	Quantity
INCUBATOR/INCUBATOR2	Digital Dry Block Incubators	1
ILC050/ILC100	InSite <i>Listeria</i> Environmental <i>Listeria</i> Species Test	50/100
MS2-COLIFORM	MicroSnap Coliform	100
MS2-TOTAL	MicroSnap Total	100
MS2-EB	MicroSnap EB	100
MS2-ECOLI	MicroSnap <i>E. coli</i>	100
MCH-2007	BAX System X5	1
ASY2018	BAX System Q7	1



InSite™ | *Listeria* | Rapid Environmental *Listeria* Species Test

Hygiena® InSite™ *Listeria* is a quick and easy test for the detection of *Listeria* species in food processing environments. The test contains a liquid media formulated with growth enhancers, selective agents, and chromogenic compounds specific to the growth of *Listeria* species.






Benefits:

- Easy to use with no preparation steps required
- Large sponge tip maximizes sample collection for accurate results
- Eliminates costly lab fees for an equivalent test
- Color results are easy to interpret – brown/black indicates presence of *Listeria* species
- Presumptive positive results in as little as 24 hours
- Negative results in 48 hours
- Self-contained tube eliminates risk of contamination

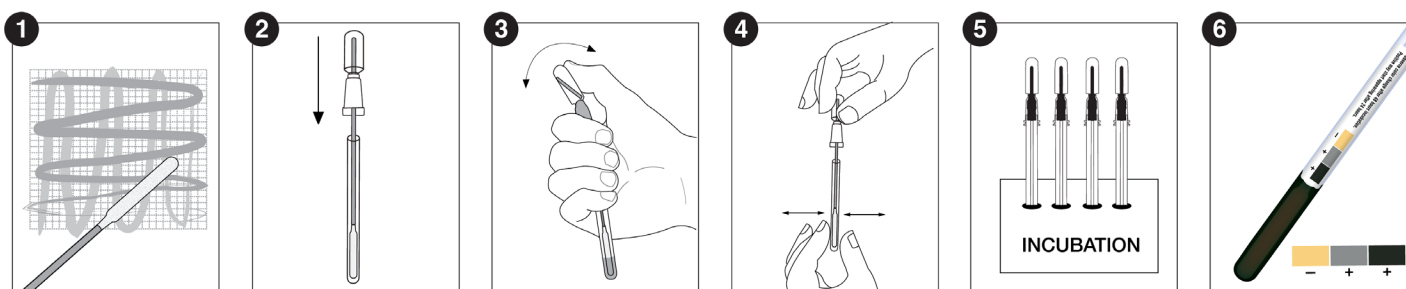
Sensitivity:

- <10 CFU *Listeria* spp.
- Detects heat injured *L. monocytogenes* at low levels (10-50 CFU of broth), even in the presence of high numbers of competing organisms

NATURAL LIGHT		
NEGATIVE	<i>LISTERIA</i> SPP.	<i>LISTERIA</i> SPP.
—	+ spp.	+ spp.
		
YELLOW	GREY	BLACK
PRESUMPTIVE POSITIVE FOR <i>LISTERIA</i> SPP.		

Catalog No.	Description	Quantity
ILC050	InSite <i>Listeria</i> Environmental <i>Listeria</i> spp.	50
ILC100	InSite <i>Listeria</i> Environmental <i>Listeria</i> spp.	100

InSite™ *Listeria* Procedure



See an instructional demo at [HygienaTV](#) or [HygienaTV](#)

Related Products

Digital Dry Block Incubators

Digital incubators are capable of up to 105 °C and compatible with any Hygiena test device. Available in two sizes. Blocks are sold separately.



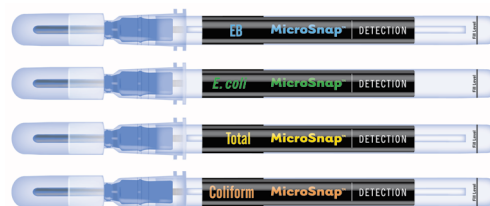
InSite™ *Salmonella*

InSite™ *Salmonella* is a quick and easy test for the detection of *Salmonella* species in 24-48 hours. The test contains a liquid media formulated with selective agents, growth enhancers, and color changing compounds specific to the growth of *Salmonella* species.



MicroSnap® EB

MicroSnap EB - a rapid test for detection and enumeration of *Enterobacteriaceae* (EB) bacteria. Results are available within the same day.



MicroSnap® *Coliform* & *E. coli*

MicroSnap *Coliform* & *E. coli* are rapid tests for detection and enumeration of *Coliform* bacteria. Single figure organisms can be detected in the same day.

MicroSnap® Total

MicroSnap Total delivers total viable count (TVC) results in the same day.

BAX® System Instruments

The BAX System harnesses the power of DNA-based foodborne pathogen detection to help you make product decisions with confidence. An extensive assay portfolio, multiple platforms, and flexible protocols enable food labs of any size to take advantage of this benchmark technology.



Catalog No.	Description	Quantity
INCUBATOR/INCUBATOR2	Digital Dry Block Incubators	1
IS050	InSite <i>Salmonella</i> Environmental <i>Salmonella</i> Species Test	50
MS2-EB	MicroSnap EB	100
MS2-COLIFORM/MS2-ECOLI	MicroSnap <i>Coliform</i> & <i>E. coli</i>	100
MS2-TOTAL	MicroSnap Total	100
MCH2007	BAX System X5	1
ASY2018	BAX System Q7	1



InSite™ | *L. mono* Glo | Rapid Environmental *Listeria* Species and *L. mono* Test



Hygiena's InSite™ *L. mono* Glo detects *Listeria* species and *L. monocytogenes* from surfaces in less than 48 hours. The dual test changes color in presence of *Listeria* species, while UV light reveals the presence of *L. mono*. The all-in-one self-contained test device reduces sample cross contamination risks that are common with other testing techniques.






Benefits:

- No complex lab equipment required
- Large pre-moistened sponge tip maximizes sample collection
- Neutralizing reagent minimizes sanitizer interference
- Selective enrichment media to maximize *Listeria* detection
- Easy-to-interpret color change
- UV fluorescence indicates pathogenic *Listeria*
- 24-hr presumptive positive results, 48-hr negative results
- Compatible with BAX® System Instruments as primary enrichment
- All-in-one test device reduces time, cost and labor over traditional screening methods

Sensitivity:

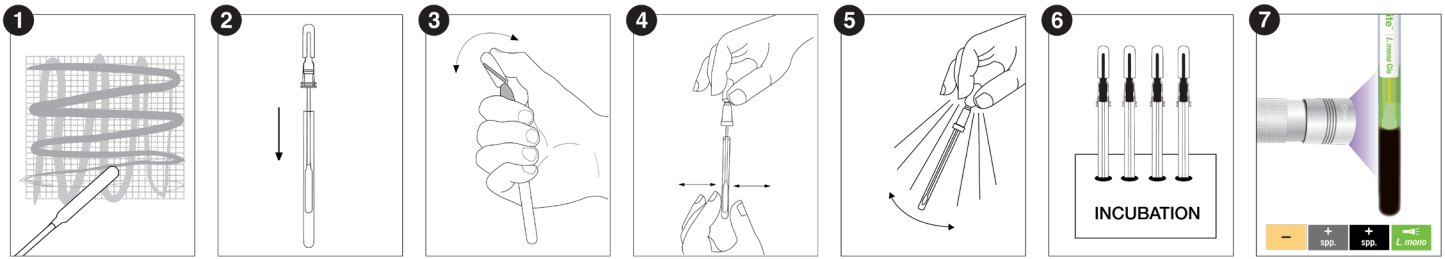
- Detects down to <10 CFU *Listeria* spp.
- Sensitive to <10 CFU *L. mono*
- Internally validated against ISO method for 100% inclusivity / 95% exclusivity
- AOAC-RI Performance Tested MethodSM validation

Interpretation of Results:

NATURAL LIGHT			UV LIGHT	
NEGATIVE	<i>LISTERIA</i> SPP.	<i>LISTERIA</i> SPP.	<i>LISTERIA</i> SPP.	<i>L. MONO</i>
—	+	+	+	—
	spp.	spp.	spp.	<i>L. mono</i>
				
YELLOW	GREY	BLACK	NO FLUORESCENCE	GREEN FLUORESCENCE
	PRESUMPTIVE POSITIVE FOR <i>LISTERIA</i> SPP.		NEGATIVE FOR <i>L. MONO</i>	POSITIVE FOR <i>L. MONO</i>

Catalog No.	Description	Quantity
ILMG050	InSite <i>L. mono</i> Glo Environmental <i>Listeria</i> Species and <i>L. mono</i> Test	50

InSite™ *L. mono* Glo Procedure



See an instructional demo at [HygienaTV](#) or [HygienaTV](#)

Related Products

InSite™ *Listeria*

For facilities who do not wish to screen for pathogenic *Listeria*, Hygiena® offers InSite™ *Listeria* which is an easy-to-use, self-contained environmental *Listeria* species test. Each device contains a chromogenic liquid media with antibiotics, growth enhancers, and color-changing compounds specific to *Listeria*.



InSite™ *Salmonella*

InSite™ *Salmonella* is an environmental *Salmonella* species test that is self-contained, easy-to-use, and does not require expensive lab equipment. Each device contains a chromogenic liquid media with antibiotics, growth enhancers, and color-changing compounds specific to *Salmonella*.



Digital Dry Block Incubators

Designed specifically for Hygiena test devices, our digital dry block incubators are available in two different sizes and come in multiple configurations.



BAX® System X5 and Q7 Instruments

The BAX System Instruments use advanced PCR technology to accurately and reliably identify foodborne pathogens in raw ingredients, finished products, and environmental samples. The automated DNA-based tests provide rapid results for 20 assays for pathogens like *Salmonella*, *Listeria*, and *E. coli*.



Catalog No.	Description	Quantity
ILC050 / ILC100	InSite <i>Listeria</i> Environmental <i>Listeria</i> Species Test	50 / 100
IS050	InSite <i>Salmonella</i> Environmental <i>Salmonella</i> Species Test	50
INCUBATOR	Small Format Digital Dry Block Incubator	1
INCUBATOR2	Lab Format Digital Dry Block Incubator	1
See Catalog	BAX System X5 and Q7 Instruments	1